

*www.suncoastnps.org*

# The Suncoast Grapevine

*Newsletter of the Suncoast Native Plant Society, Inc.*



**Volume 27 Number 4**

**APRIL 2010**

## Imperiled Butterflies of Florida

**Presented by Dr. Marc Minno  
Hillsborough County Extension Service  
Wednesday, April 21 @ 7pm**

Marc Minno, PhD is a member of the Paynes Prairie chapter of FNPS an expert and published author on Florida butterflies. Professionally, he is a senior regulatory scientist for the St. Johns Water Management District. Florida has reached a tipping point in the conservation of our native butterflies. Southern Florida especially has seen a tremendous decline and loss of butterflies. Two endemic skippers are presumed extinct and a number of other butterflies are barely surviving. Butterflies have also declined in Central and Northern Florida. We will discuss Florida's rarest butterflies and how they got that way. Good photography and a talk that emphasizes importance of native plants to our rare butterflies are guaranteed extras in this presentation!

Marc is the author or coauthor of six books on butterflies, including [Florida Butterfly Gardening: A Complete Guide to Attracting, Identifying, and Enjoying Butterflies](#). We have invited him to have his books available for sale at the meeting.

Dr. Minno received a Bachelor's degree in entomology from Purdue University, a Master's in entomology from the University of California at Davis, and a Ph.D. in zoology from the University of Florida. He works as a Supervising Regulatory Scientist for the St. Johns River Water Management District in Palatka. Dr. Minno has written or co-authored many scientific and popular articles on butterflies and moths as well as many books of Florida interest.

*- Submitted by Shirley Denton*



The Florida Native Plant Society was organized in 1980 to promote the preservation, conservation, and restoration of the native plants and native plant communities of Florida. For more information about the Florida Native Plant Society, please visit our web site: [www.fnps.org](http://www.fnps.org)

## USF Botanical Gardens Spring Plant Festival Saturday, April 10th and Sunday, April 11th

The University of South Florida Botanical Gardens hosts their 21st annual Spring Plant Festival Apr. 10 from 10 a.m. to 4 p.m. and Apr. 11 from 10 a.m. to 3 p.m. Admission is \$5 for the general public and free for Botanical Garden members and children under 12 years old.

The Spring Plant Festival features a **FESTIVAL Bonsai Display by the Hukyu Bonsai Society**. The Bonsai Society Members will be offering a basic bonsai care talk at 11:00 and will be on hand throughout the event to answer questions. Also featured, the Garden unveils the NEW Carnivorous Plant Area, just installed. There will be a Carnivorous Plant Care talk Saturday at noon.

It's time to replant and rethink your garden. Ask the experts for help. The actual growers and plant club members will be on hand. Let's get busy replanting our yards. There will be over 70 vendors selling plants and plant-related items. Vendors at this event include local plant clubs and societies, as well as commercial growers from throughout the state. Plants offered through clubs and societies include: crotons, African violets, orchids, bromeliads, cactus and succulents, bamboo, bonsai, bougainvillea, native plants, camellias, tropical fruit trees, palms, carnivorous plants, gesneriads and more. There will be workshops from 12:00 to 2:00 on Apr. 11.

For more information please call (813) 910-3274 or [www.cas.usf.edu/garden](http://www.cas.usf.edu/garden)

*- USF Press Release, taken from Botanical Gardens site*

Please be sure to visit our Suncoast Native Plant Society booth at the event! Support your chapter at one of our largest fundraisers for the year. If you are interested in volunteering, please email [troy@springerenvironmental.com](mailto:troy@springerenvironmental.com) or call him at 813-967-4538.

### Also Around Town....

#### **Tampa Audubon Society Monthly Program**

April 8 @ 7pm: Nanette O' Hara, "State of Our Bay"  
5339 SR 579, Hillsborough County Extension Service  
<http://www.tampaaudubon.org>



#### **Camp Bayou Open House**

April 17 @ 8am—2pm  
4202 24th Street SE, Ruskin  
<http://campbayou.org/newsletters/2010spring.pdf>

#### **Chinsegut Birding and Wildlife Festival**

April 17 @ 7:30am—4:30pm  
23212 Lake Lindsey Road, Brooksville  
[http://myfwc.com/docs/Calendar/Chinsegut\\_Flyer.pdf](http://myfwc.com/docs/Calendar/Chinsegut_Flyer.pdf)

#### **Nature's Classroom Open House**

April 24-25 @ 10—4pm  
13100 Verges Road, Thonotosassa  
<http://www.naturesclassroom.net/index.cfm>



## Don't miss these exciting Keynote Programs:

University of Florida Professor Vassiliki Betty Smocovitis asks: Why do most people tend to appreciate animals so much more than plants? And, why we should care. That question is at the center of efforts to "Prevent Plant Blindness."

Author Bailey White will tell stories with a unique perspective gained from many years of good living.

Landscape Architect, Darryl Morrison: Overcoming Faceless/ Placeless Landscape Design -uses of fire and other natural processes in nationally recognized native plant designs.

### Conference Activities will include:

- ☼ Field Trips
- ☼ Workshops
- ☼ Current Research, Science and Poster Sessions
- ☼ Community Interest Sessions
- ☼ Exhibitors Including Plant, Book and Art Sales
- ☼ Keynote Speakers
- ☼ Special Events
- ☼ CEU Credits Available

Tallahassee-Leon County Civic Center and Doubletree Hotel

Registration, sponsorship and vendor applications, programs, field trips, and Doubletree Hotel and other information is available online at

[www.fnps.org/conference](http://www.fnps.org/conference).

For questions, contact FNPS at (321) 271-6702 or email [info@fnps.org](mailto:info@fnps.org)

### March Membership Meeting: Thank you!

#### Plants:

Fred Mulholland, Bunny Worth, James Wheeler, Ron Chicone

#### Refreshments:

James Wheeler



# Local Meetings & Events

compiled by Shawna Everidge, please send submissions to [severidge@plantcitygov.com](mailto:severidge@plantcitygov.com)

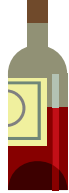
## Upcoming Suncoast Native Plant Society Meetings...

- ☼ April—Mark Minno. *Florida Butterflies*.
- ☼ May—Karen Fraley. *Florida Ethnobotany*.
- ☼ June—Share your garden night. Send/bring a brief PowerPoint about your native gardening successes.
- ☼ July—Joint meeting with Audubon and Sierra. Sierra is hosting. Date may vary from our usual meeting day.
- ☼ August—Open, please send your ideas to [ecotypes@myrapidsys.com](mailto:ecotypes@myrapidsys.com) (a.k.a. Shirley Denton)
- ☼ September—Ann Paul. *Florida Herons and Egrets*.
- ☼ October—John Miller. *Florida Geology as it Relates to Native Plants*.
- ☼ November—Shawna Everidge. *Exotic Pets*.
- ☼ December—No meeting.

A recent suggestion was to find a speaker on plant names. If you know someone who would be interested, please contact [ecotypes@myrapidsys.com](mailto:ecotypes@myrapidsys.com).

If you'd be interested in a short (5 minute) vignette about a plant each month, we could have someone speak briefly before the program about that plant, its botanical and ecological characteristics, and the source of its scientific and common names. If interested, and if you would like to speak, contact guess who (see links in text above).

- Submitted by Shirley Denton



## Wine & Cheese Party

FREE POTTED PLANTS!

Sunday, April 25, 2010 from 1-5pm

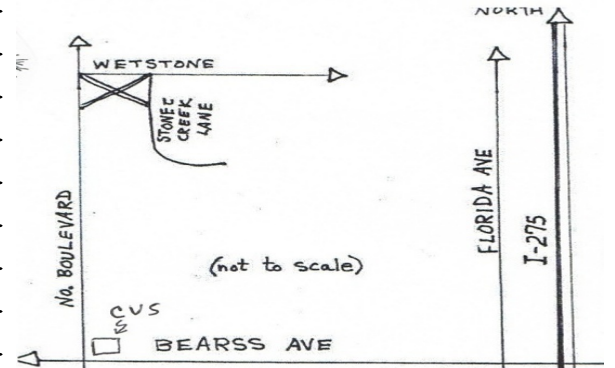
The Mulhollands

15410 Stone Creek Lane

Tampa, FL 33613

There are more than 150 species of native plants in the yard. An identification list will be provided that shows what and where they are located.

It's a party, mostly outdoors, rain or shine, so dress casually. There is some seating outside, but a few extra lawn chairs would help. If you need more information, call 813-962-7020. See Native Plants in Suburbia: One Way to do it Without a Lawn



## Hillsborough River State Park Field Trip Recap



A group of ten members met at the Model Dairy section of the State Park and waited, and waited, and waited for the embarrassed trip leader who forgot to set her bedside clock ahead 1 hour. But members were served well while Carmel Van-Hoek explained how and where she found the endangered Brooksville bellflower (*Campanula robinsiae*) beside a nearby wetland, which unfortunately on the day of the field trip was completely underwater. The site was filled with Prairie Iris (*Iris hexagona*), which could be flowering as you read this! Shirley Denton also did her share in explaining how Model Dairy became a part of the Hillsborough River State Park.

We left the "bellflower" wetland, drove into the park, and walked along the rapid trail, viewing many newly blooming shrubs including Walter's viburnum. The purpose of the trip was to explore unique areas of the park found by Carmel and Gail over the past years, as Carmel used to collect plant specimens for the state park system. One of these stops was a Tupelo Swamp which, as expected, was completely flooded - when only last year it was completely dry! The periphery had visible Cypress and some Swamp Tupelo, but no one was able to see the interior where all the Swamp Tupelo (*NYSE sylvatica var. biflora*) resides.



The last stop of the day was another flooded swamp full of flowering *Utricularia inflata*, commonly known as floating bladderwort, a very unique plant with tiny bladders used for trapping small insects - a carnivorous plant. Then, across the road in an open marsh, Shirley, Carmel and Ron waded in and found the "little floating bladderwort" *Utricularia radiata*.

Even with the high water making some areas inaccessible, we saw some interesting Florida natives!

- Submission and photos by Gail Parsons

April 24, 2010  
VAN TRIP to KANAPAHA BOTANICAL GARDENS  
and the BUTTERFLY RAINFOREST  
at the Florida Museum of Natural History

Members have requested an occasional bus/van trip, and we are making an effort to accommodate those requests! Kanapaha Gardens is a 62 acre facility with 24 major collections, including a hummingbird garden and the largest herb garden in the southeast - all viewed from a 1.5 mile paved walkway!

After strolling the gardens, we will drive approximately 3.5 miles to the Florida Museum of Natural History where participants will have the following options: visit the Butterfly Rainforest (cost \$8.00 FL residents or \$7.00 for ages 62+), or a special 200 quilt exhibit featuring natural Florida which ends Sunday, the 25th (cost \$5.00 and \$4.50).

The combined cost to visit both the Butterfly Rainforest and Natural Florida Quilt exhibit is \$12 FL & \$11 for age 62+. Other options include visiting the Florida Wildflower and Butterfly Garden, fossil plant garden, *South Florida People and Environments* exhibit, and *Northwest Florida: Waterways and Wildlife*, all of which are free (visit the website for more details @ [www.flmnh.ufl.edu](http://www.flmnh.ufl.edu))

Cost for the van trip and entrance to Kanapaha Gardens is \$25.00. The 15 passenger van is limited to the first 14 people to send in their \$25.00. **The deadline to reserve a seat is April 21 at the membership meeting.**

Send a check for \$25.00 made out to:

Suncoast Native Plant Society  
c/o Daphne Lambright  
19204 Autumn Woods Avenue  
Tampa, FL 33647



Daphne will keep track of the order in which reservations are received. No checks will be deposited until the van reaches capacity. If we receive a “big response” to this offer, we may be able to rent a second van. However, van availability and cost is dependent on how quickly everyone responds to this notice. In the event we reach capacity and go over by a few with the first van, but don’t have sufficient numbers for a second van, we will return those checks. Please include an email address and phone number with your check. The meeting place for departure will be announced at the Wednesday meeting.

**Field trip chair: Gail Parsons, for more information please call 813-920-2730 or 928-1412 cell.**

*Submitted by Gail Parsons*

## PLANT PROFILE

**Common name:** Rough skullcap, helmet skullcap

**Botanical name:** *Scutellaria integrifolia*

**Family:** Lamiaceae (Mint)

**Growth habit:** Perennial wildflower

**Mature size (h):** 2.5 ft.

**Leaves:** Opposite, simple, sparingly hairy and dotted; lower leaves are toothed, ovate and rough; upper leaves are narrow and entire

**Flower:** Corolla, blue to pale violet, 2-lipped; upper lip hood like, 3-lobed. Style 2-lobed, calyx 2-lipped, upper lip crested. Flowers in terminal, spike like racemes.

**Bloom period:** March through November

**Stem:** Upright, hairy, often branched and square

**Light:** Full to part sun

**Water:** Drought tolerant after establishment

**Soil:** Well-drained soils

**Salt tolerant:** No

**Propagation:** Seed, stem cuttings

**Florida zones:** N, C

**Landscape uses:** Wildflower garden

**Native habitat:** Dry pinelands, sand hills



**Note:** Similar species in our area is Florida scrub skullcap (*Scutellaria arenicola*); two species are found farther north in Hernando County, Small's skullcap (*Scutellaria multiglandulosa*) and Heartleaf skullcap (*Scutellaria ovata* subsp. *bracteata*).

### References:

Taylor, Walter Kingsley, 1998, *Florida Wildflowers in Their Natural Communities*, University of Florida Press, Gainesville, Florida, 170 p.

Taylor, Walter Kingsley, 1992, *The Guide to Florida Wildflowers*, Taylor Publishing Co., Dallas, TX, 320 p.

U.S. Department of Agriculture, No date, *Southern Wetlands Flora: Field Office Guide to Plant Species*, USDA Soil Conservation Service, South National Technical Center, Fort Worth, Texas, Northern Prairie Wildlife Research Center home page, Jamestown, ND.

*Information compiled by George Kish, photo by Shirley Denton*

## Florida Native Plant Society Membership Application

Membership in the Florida Native Plant Society enables you to receive their wonderful quarterly magazine *The Palmetto*. Joining the SNPS also entitles you to membership privileges in the Suncoast Native Plant Society and a subscription to their monthly newsletter *The Suncoast Grapevine*. Contact the membership chair, Shirley Denton, at 986-6485.

### Check pertinent category:

New Member                       Renewal

- |  |   |
|--|---|
| <input type="checkbox"/> Individual \$35           | <input type="checkbox"/> Not-for-profit organization \$50 |
| <input type="checkbox"/> Full time student \$15    | <input type="checkbox"/> Business or corporate \$125      |
| <input type="checkbox"/> Library subscription \$15 | <input type="checkbox"/> Supporting \$100                 |
| <input type="checkbox"/> Family or household \$50  | <input type="checkbox"/> Donor \$250                      |
| <input type="checkbox"/> Contributing \$75         |   |
| <input type="checkbox"/> Life \$1,000              |   |

Name \_\_\_\_\_

Business name or organization \_\_\_\_\_

Address \_\_\_\_\_

City, State and Zip \_\_\_\_\_

Home phone \_\_\_\_\_ Email \_\_\_\_\_

Make check payable to **FNPS**.

Detach and mail to:

**FNPS**

**P.O. Box 278**

**Melbourne, FL 32902-0278**

## Activities & Committee Chairs

### Field Trips

Gail Parsons

### Publications

Dick Wunderlin 977-6484

George Kish 920-0853

### Librarian

Vikki Sinclair 989-2896

### Membership

Shirley Denton 986-6485

### Newsletter Editor

Shawna Everidge 659-4298

Mike Fite, Assistant 977-0892

### Programs and Publicity

Shirley Denton

### Outreach

Fred Mulholland

### USF Plant Sale

Troy Springer 967-4538

### USF Botanical Garden Liaison

Kim Hutton 974-2329

### Chapter Representative

Troy Springer

### Webmaster

Shirley Denton 986-6485

### Conservation

Ron Chicone

Daphne Lambright

Bob Upcavage

## Newsletter Submissions

Deadline for the next issue:

**MAY 2**

Please send articles and original artwork for The Suncoast Grapevine to **Shawna Everidge**, by the **deadline** of this month. Text should be in MS Word; graphics should be in a standard graphic format (.jpg, .bmp, .gif). Previously published artwork should be accompanied by a letter of permission from the original publisher.

Email...

[severidge@plantcitygov.com](mailto:severidge@plantcitygov.com)



## Meeting Locations

Suncoast Native Plant Society, Inc. meets the third Wednesday of the month at 7:00 p.m. at the **Hillsborough Extension office in Seffner.**

### SNPS Web Address:

<http://www.SuncoastNPS.org>



## Officers & Board of Directors

### President

Troy Springer

### Vice-president

Shirley Denton

### Secretary

Ron Chicone

### Treasurer

Daphne Lambright

### Board Members

Gail Parsons

Fred Mulholland

*The SNPS BOD meets regularly at a variety of locations. If you are interested in attending a BOD meeting, please check the location at a monthly membership meeting or call Troy Springer at 813-967-4538.*

Suncoast Chapter of Florida Native Plant Society, Inc.  
P.O. Box 1158  
Seffner, FL 33583-1158

**Please deliver to:**