



Club logo:  
*Helianthus debilis*

The

Suncoast Native Plant Society,

Volume 22 Number 3

MARCH 2005

**March 16 Meeting  
(at the Learning Gate Charter School)**

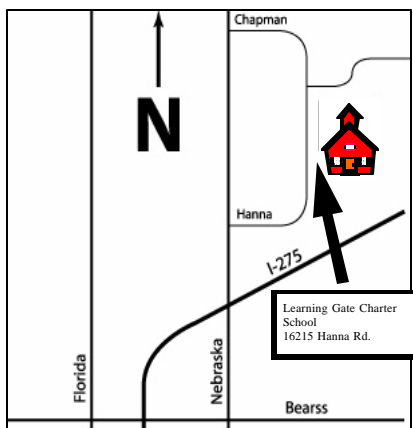
THE ROLE OF FIRE IN FLORIDA'S ECOLOGY,  
by Carl Weekley

For many years Smokey the Bear's message of fire suppression defined public policy in the United States. Now that more ecologically sound policies have taken hold, Smokey no longer admonishes us from billboards along the nation's highways, and many people are beginning to understand that fire plays an important role in nature's plan.

In Florida, fire is a central force defining most ecosystems, from marshes to xeric uplands. Our speaker for March, Carl Weekley of Archbold Biological Station, will review the history of fire in Florida ecosystems, and talk about the consequences of fire suppression, particularly in the scrub

and sandhill communities where he works. He will explain how fire structures these pyrogenic communities, how a few endemic species respond to fire, and will describe some of the devices used at Archbold to measure fire's intensity.

Carl earned his BA at Georgetown University, and his MS in Biology at Florida International University in 1993. He has held various posts in Biology and Ecology in Florida, and since 1995 has been working on the rare and endemic plants of the Lake Wales Ridge.



- - - Contributed by Harriett Wright

## President's Message

In my January message I talked about the Board's commitment to increasing our visibility to the public and to carrying out the mission of the Florida Native Plant Society. Our chapter has a unique opportunity to educate homeowners associations, civic groups, and homeowners about the role of native plant communities and habitats. We need to get our message out about the need to preserve and restore these communities to maintain healthy ecosystems, and the value of creating mini-habitats in our own back yards.

Please join with me to make a difference by volunteering for outreach activities, by participating in field trips and workshops, and by spreading the word about our Society.

In February, Mike Fite and Dan Duerr led a field trip to Violet Cury Preserve and the field trip was a big success. Mike and Dan had never led a field trip for our chapter but they stepped up, had some fun, and shared knowledge about native plant communities with the group. We need more members like Mike and Dan to step forward, get more involved and help make our chapter the best in the State.

Our next activity is on March 19 at Hillsborough State Park for the annual event - **A River Runs Through It**. I only have one volunteer so far and we need at least 3 more people to staff our display. Please be generous with your time and help us on March 19 at Hillsborough State Park.

**George Kish**

## A Big Thank You

Thanks to those who contributed Raffle plants at the last meeting, Debbie Butts, Fred Mulholland and Harriett Wright.

Remember, you get a free plant before the raffle begins when you donate plants for the raffle.



## March 19th

### **A River Runs Through It 2005** **Community Fair**

This annual event will be held on Saturday, March 19, 2005 from 10 a.m. to 2:30 p.m. at Hillsborough River State Park, 15402 Highway 301 North, Thonotosassa, Parking Lot #3. We are planning to have a booth at this event and will need volunteers to answer questions about native plants during the event.

There will be a sign-up sheet at the next meeting with details and a map. This will be a great opportunity to get our message out about native plants and native plant landscaping.

. . . Submitted by George Kish

### *Where is this HAPPY?* *FRIENDLY? OUTGOING* *PERSON?*

What a better way to make new friends and help establish a strong membership base than to volunteer for Chairman of the Membership Committee. It is not a difficult or time consuming job.

Please call George Kish at 920-0853.

### **Board Meeting synopsis of January 26, 2005**

#### Budget

- Budget completed, \$8,100 in revenue, \$9,500 in expense.
- Lengthy discussion regarding non-profit incorporation status and relationship with FNPS. Agreed to research relationship with state and explain options to membership.
- Will file State corporate income tax return for FY04.

Discussed chairs for committees; still need Membership and Field trips.

- Field trip at Violet Cury on 2/19/05

Discussed how to inform membership about meeting place suggestion – will have a separate mailing with a ballot.

George asked to speak at Brooker Creek and Hillsborough St. Park and eager to do it.

**The Meeting Place Search Committee's recommendation for new meeting place.**

In response to concerns that the location of our current meeting place in Lutz is too far north for the convenience of many of our members, the Board of Directors formed a Meeting Place Search Committee, chaired by Harriett Wright, to try to find a more centrally located meeting place.

After considering many possibilities, almost all of which were either unavailable time-wise or otherwise unsuitable, the board has decided to recommend the Hillsborough County Extension Service Office in Seffner on County Road 579, which is close to the intersection of Interstate Highways 4 and 75. Please consider this recommendation, as you will be given the opportunity to vote whether to move our meeting place to the Extension Office or keep it at the Learning Gate School.

A ballot will be mailed to you before the April membership meeting. You may return your ballot at the April meeting or mail it to the SNPS post office box for receipt no later than April 27th, 2005. The Board of Directors will tally the vote at the April board meeting and the results will be announced in the May newsletter.

This is an important issue for SNPS, and your vote is important.

- |  |                                    |
|--|------------------------------------|
| Armwood High School                    | Lightfoot Recreation Center        |
| Brandon High School                    | Mango Recreation Center            |
| Brotherhood of Electrical Workers Hall | Seffner Senior Center              |
| Chamberlain High School                | Seminole Heights Garden Center     |
| County Cooperative Extension Service   | Sterling Heights Recreation Center |
| First United Methodist Church of Tampa | Thonotosassa Recreation Center     |
| Florida College Academy                | Unitarian Universalist Church      |
| Hillsborough Community College         | University of Tampa WMNF           |
| Hillsborough County Main Library       |                                    |
| Jefferson High School                  |                                    |

**BUDGET 2005**

<b>REVENUE</b>	
Membership Dues	\$1,000.00
Book Sales	\$500.00
Plant raffle	\$200.00
Plant Sales	\$6,000.00
Royalties	\$400.00
Donations	00.00
Learning Center Event	00.00
Misc.	00.00
From Savings	\$1,500.00
<b>Total</b>	<b>\$9,600.00</b>

<b>EXPENSES</b>	
Administration	\$1,000.00
Newsletter	\$2,000.00
Book Purchases	\$400.00
Plant Purchases	\$3,800.00
T Shirts Purchases	00.00
Taxes	\$400.00
Programs	\$700.00
Grants	\$600.00
Publication Comm.	00.00
Field Trip Comm.	00.00
Education Comm.	00.00
Donations	\$300.00
Library	\$300.00
Learning Center Event	00.00
Outreach	\$100.00
Misc.	00.00
<b>Total</b>	<b>\$9,600.00</b>

Submitted by Pat Clauser, Treasurer



# Suncoast Calendar

## **REGULAR MEETINGS OF SUNCOAST NATIVE PLANT SOCIETY** at the Learning Gate Charter

School, 16215 Hanna Road, in Lutz. 7 PM

MAR 16    APR 20    MAY 18

**FNPS PINELLAS CHAPTER:** (Moccasin Lake Nature Park, 2750 Park Trail, Clearwater; 727-544-7341); Weds; 7:30 pm

**APR 7**—Sex in the garden

**APR 17**—Spring Plant Sale

**FNPS HERNANDO CHAPTER:** Meets first Monday of the month at county Extension service, 19490 Oliver St., Brooksville; 6:30 pm.

**APR 4**—Beneficial Insects

**FNPS PASCO CHAPTER:** Meets monthly on second Tuesday; 7:30 pm at St. Marks Fellowship Hall, 7922 State Road 52, Hudson, FL

**BOK TOWER** [www.boktower.org/whatsnew](http://www.boktower.org/whatsnew)  
**Camellias** —mid-December through mid-March  
**Azaleas** —mid-February through mid-March  
**Pinewood estate**—now open for a small fee  
**Art Exhibit - Florida's Vanishing Landscapes** April 2-June 2.

## **CHINSEGUT NATURE CENTER**

(352)754-6722 or website: [/floridaconservation.org/chinsegut/schedule.html](http://floridaconservation.org/chinsegut/schedule.html)

**MAR 15**—Swallow-tailed Kites 7:00 pm

**APR 5**—Big Pinewood Wildflower Walk 9:00 am

**APR 12**—Invasive Exotic Reptiles and Amphibians in Florida 7:00 pm

## **LOWRY PARK ZOO**

For information, (813) **935-8552**, ext. **239**. or visit the website: [http://www.lowryparkzoo.com/html/12/12\\_calendar\\_events.html](http://www.lowryparkzoo.com/html/12/12_calendar_events.html)

**MASTER GARDENER PROGRAMS** Call 813-744-5519 for details and locations or website:

[www.hillsborough.extension.ufl.edu/HomeHort](http://www.hillsborough.extension.ufl.edu/HomeHort).

**MAR 15**—Butterfly Gardening 7:00 pm

**MAR 23**—Wildflowers 10:00 am

**APR 5**—Landscape Design Workshop 9-12 noon

**APR 5**—Having a Wildlife Habitat 7:00 pm

**APR 12**—Flowering Shrubs and Vines 7:00 pm

**APR 16**—Florida Friendly Landscaping Call for more information

**ST. PETERSBURG AUDUBON** Meets at Science Center, 7701 22nd Avenue North, St. Pete; For information call 727-384-0027 or website, [www.stpeteaudubon.org/main.htm](http://www.stpeteaudubon.org/main.htm); meets the 3rd Tuesday of the month September through November and January through April at the Science Center, 7701 22nd Ave. N. west of the Tyrone Square Mall  
**MAR 15**—Management of Shell Key and Brooker Creek Preserves; 7:00 pm

**SELBY BOTANICAL GARDENS** see website: [www.selby.org](http://www.selby.org) or phone 941-366-5731.

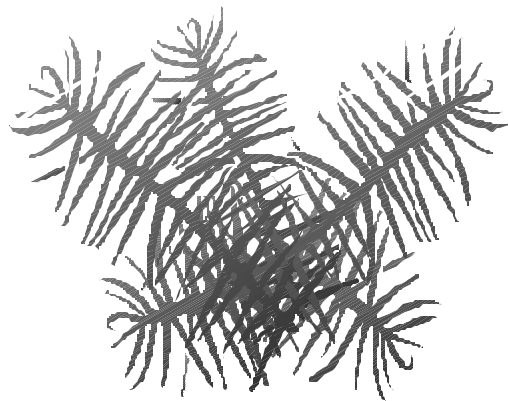
**JAN 8 through APR 3**—The Flowering Amazon by Margaret Mee

**SIERRA CLUB:** meets Wednesdays at 7:00 PM Mort Park Center, 1815 148th Ave. East, Tampa; For information: 813-253-3555 or 727-824-8813.

**USF BOTANICAL GARDEN** 974-2329.

Volunteer orientation last Saturday morning of the month 10:00.

**APR 9-10**—Annual Spring Plant Festival



## PLANT PROFILE

- **Common name** : Starry Rosinweed
- **Botanical name**: *Silphium asteriscus* L.
- **Synonyms**: *S. dentatum* Elliott; *S. gracile* A. Gray; *S. simpsonii* Greene
- **Family**: Asteraceae
- **Zone**: 8-9
- **Plant Habit**: Coarse, stout, erect perennial herb
- **Habitat**: Sandhills, pine flatwoods
- **Size**: 2' - 4' tall
- **Leaves**: Alternate and opposite, rough to the touch, leaf margins toothed
- **Inflorescence**: Showy, yellow daisy-like heads, solitary or few-flowered
- **Flowering time**: Early summer through early fall
- **Distribution**: Panhandle south along the west coast to Lee County
- **Growing conditions**: Well-drained soil
- **Light**: Full sun to part shade
- **Propagation**: Seeds; division
- **Motility**: Rarely spreading by seed, if grown in large numbers
- **Maintenance**: Annual pruning to the ground to remove old stems and flower stalks
- **Availability**: Specialty native plant nurseries, FNPS chapter sales.
- **Comments**: Slow to establish. A related, larger species with larger, mostly basal leaves occurs in northern Florida south to Pasco County.

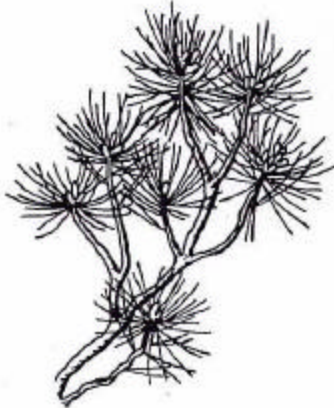
### References:

- Osorio, Rufino, 2001. **A Gardener's Guide to Florida's Native Plants**. University Press of Florida, Gainesville, FL
- Wunderlin, R.P. and B.F. Hansen. 2003. **Guide to the Vascular Plants of Florida**. University Press of Florida, Gainesville, FL.
- Wunderlin, R.P. and B.F. Hansen. 2005. **Atlas of Florida Vascular Plants** (<http://plantatlas.usf.edu/>).

Information compiled by Shirley Brown and Dick Wunderlin  
Photographs by Walter K Taylor and Shirley Denton



The Florida Native Plant Society was organized in 1980 to promote the preservation, conservation, and restoration of the native plants and native plant communities of Florida. For more information about the Florida Native Plant Society, please visit our web site: [www.fnps.org](http://www.fnps.org).



## WINE & CHEESE PARTY

Suncoast Native Plant Society

**The Mulhollands**  
15410 Stonecreek Lane  
Tampa, FL 33613

**Sunday, May 22, 2005**  
**From 1:00 PM to 5:00 PM**



There are more than 200 species of native plants in the yard. An identification list will be provided that shows what and where they are located.

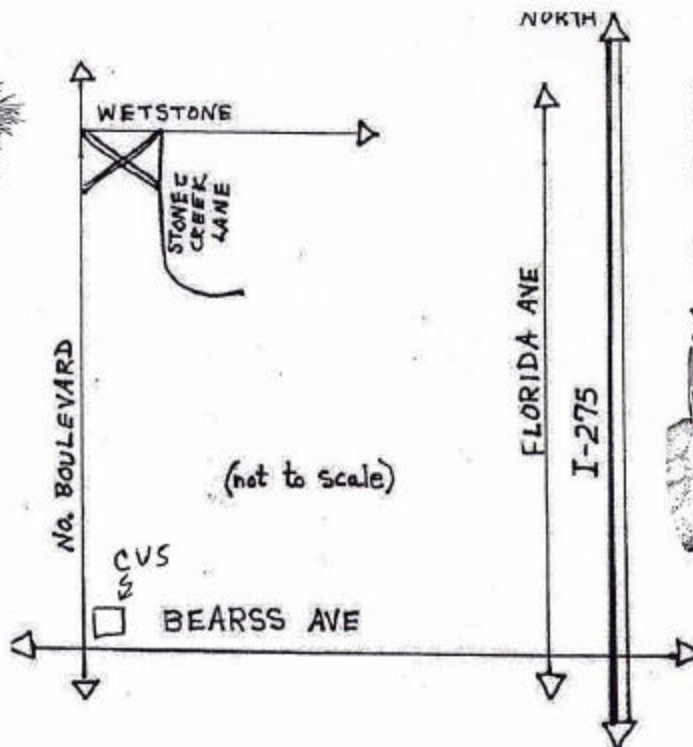
*See rare Florida Native tree*

## FREE POTTED PLANTS

It's a party, mostly outdoors, rain or shine, so dress casually. There is some seating outside, but a few extra lawn chairs would help. If you need more information call: (813) 962-7020



## SEE NATIVE PLANTS IN SUBURBIA: ONE WAY TO DO IT WITHOUT A LAWN



## Programs For 2005

By Harriett Wright

**January 19, Brian Schatz:** WMNF Project. A native plant demonstration garden for Tampa.

**February 16, Warren Clark:** History of Native Gardening in Florida.

**March 16, Carl Weekley:** Florida's Fire Ecology. The history of fire in Florida ecosystems, and the consequences of fire suppression, particularly in scrub and sandhill communities. How fire structures these pyrogenic communities, how a few endemic species respond to fire, and devices used at Archbold Biological Station to measure fire's intensity.

**April 20, Mark Hostetler:** Why the Hell Should I Mow My Lawn?: Thoughts, Issues, and Research on Developing Eco-Intelligent Communities

**May 18, William Lorenzen:** Tampa Bay Conservancy Project.

**June 15, Pinellas Chapter:** Landscaping and Gardening with Native Plants.

**July 20, Katie Sieving:** Behavioral Facilitation by Titmice in Winter Flocks. Joint meeting with Sierra and Audubon.

**August 17, Sid Taylor:** Historical Commercial Exploitation of Pinus in The Land of Flowers. An expose of Naval Stores and turpentine Distillation.

**September 21, George Kish:** Native Grasses of Florida

**October 19, John Tobe:** Pitcherplants of Florida

**November 16, Steve Farnsworth:** Pseudonatives: Plants that are passed off as natives but aren't.

## Florida Native Plant Society Membership Application

Membership in the Florida Native Plant Society enables you to receive their wonderful quarterly magazine The Palmetto. Joining the FNPS also entitles you to membership privileges in the Suncoast Native Plant Society, Inc. and a subscription to their monthly newsletter The Suncoast Grapevine. Contact the membership chair, George Kish at (813) 920-0853.

New Member                       Renewal

Name \_\_\_\_\_

Business name or organization \_\_\_\_\_

Address \_\_\_\_\_

City, State and Zip \_\_\_\_\_

Home phone \_\_\_\_\_ Work phone \_\_\_\_\_

E-mail and/or FAX \_\_\_\_\_

### Check pertinent category:

- |  |   |
|--|---|
| <input type="checkbox"/> Individual \$25           | <input type="checkbox"/> Not-for-profit organization \$50 |
| <input type="checkbox"/> Full time student \$15    | <input type="checkbox"/> Business or corporate \$100      |
| <input type="checkbox"/> Library subscription \$15 | <input type="checkbox"/> Supporting \$100                 |
| <input type="checkbox"/> Family or household \$30  | <input type="checkbox"/> Donor \$250                      |
| <input type="checkbox"/> Contributing \$40         |   |

Make check payable to **FNPS.**

Detach and mail to:

**Suncoast Native Plant Society**

**P.O. Box 82893**

**Tampa, FL 33682-2893**

## Activities & Committee Chairs

### Field trips

Vacant

### Publications

Richard Wunderlin 977-6484

### Librarian

Vicki Sinclair 989-2896

### Membership

Vacant

### Newsletter editor

Shirley Brown 977-0454

Mike Fite, Assistant 977-0892

### Programs

Harriett Wright 908-9398

### Publicity

Ameé Bailey 863-206-3439(c)

### Refreshments

Lucy Hoyt 960-3178

### Education

Betty Wargo 237-1509

### Book Sales

Sally Sun 935-1312

### USF Plant Sale

Sally Sun 935-1312

### Conference

Ameé Bailey 863-206-3439(c)

### Meeting Location

Harriett Wright 908-9398

### USF Botanical Garden Liaison

Shirley Brown 977-0454

## Newsletter Submissions

**Deadline for the next issue:**

**APR 4**

Please send articles and original artwork for The Suncoast Grapevine to the editor, Shirley Brown, by the **deadline** of each month (earlier, please, if not typed). Text should be in MS Word; graphics should be in a standard graphic format. Previously published artwork should be accompanied by a letter of permission from the original publisher.

Mail:..... SNPS, Inc.

P.O. Box 82893

Tampa, FL 33682-2893

Email:...srbrown11@msn.com

## SNPS Address

**Suncoast Native Plant Society, Inc.**

**P.O. Box 82893**

**Tampa, FL 33682-2893**

## Meeting Location

Suncoast Native Plant Society, Inc. meets the third Wednesday of the month at 7:00 p.m. at the **Learning Gate Charter School, 16215 Hanna Road, Lutz.**

## SNPS Web Address

**[www.fnps.org/chapters/suncoast](http://www.fnps.org/chapters/suncoast)**

## Grapevine Subscription

You may subscribe to the Suncoast Grapevine (not including membership in the SNPS or the FNPS) for \$10 per year. Contact George Kish at 920-0853.

## Officers & Board of Directors

### President

George Kish 920-0853

### Vice-president

Harriett Wright 908-9398

### Secretary

Ameé Bailey 863-206-3439(c)

### Treasurer

Pat Clouser 662-7222

### Chapter Representative

Ameé Bailey 662-5954

### Board Members

Ameé Bailey 863-206-3439(c)

Shirley Brown 977-0454

Pat Clouser 662-7222

JoAnn Hoffman 671-2131

George Kish 920-0853

Bob Scheible 626-6815

Harriett Wright 908-9398

**Stamp**



**Please deliver to:**