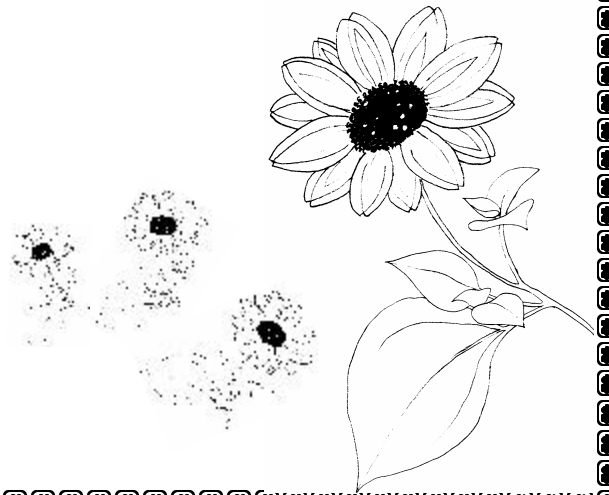


# The Suncoast

Suncoast Native Plant Society,



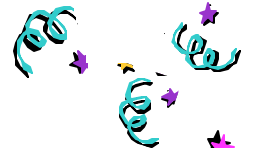
**Volume 20 Number 12**

**December 2003**



## Happy New Year!!

### 20th Anniversary Celebration



The anniversary celebration was a great success. Thanks to our member's contributions, the food was outstanding, diverse, ample, and delicious. We had 56 attendees of which 20 were guests.

We were very fortunate to have the T-shirts donated by WMNF with the exception of the Screen and Printing costs. We sold 31 shirts and there are 19 remaining, four medium, ten large, and 5 extra large. If you would like to reserve your shirt, call Ameer Bailey at 662-5954.

President Kish awarded certificates of merit and appreciation to many members, both original and current for their contributions to the society; namely, Ken Albritton, Harriett Wright, Betty Wargo, Carmel VanHoek, Sally Sun, Fred Spriggs, Mariella Smith, Vikki Sinclair, Bob Scheible, Fred Mulholland, Susan Johnston, Joel Jackson, Lucy Hoyt, Steve Dickman, Debbie Butts, Shirley Brown, Cliff Brown, Ameer Bailey. Dr. Wunderlin gave us a brief overview of our history. We duly elected our Board of Directors. Three of our grant recipients presented their projects with great enthusiasm and appreciation. And last but not least, nearly everyone went home with a door prize, either a plant, a book, a gift certificate, a botanical, or other miscellaneous item thanks to TreeMart, Joel Jackson, Louis Del Favero Orchids, Harriett Wright, Riverview Flower Farms, Susan Trammel, Susan Johnston, Wild Birds Unlimited, Mimi's Café, Fletcher's Backstreet Grille, Antonio's Pasta Grille, Shirley Brown, Ameer Bailey, Richard Wunderlin, Laurie Walker of the Botanical Gardens at USF, Museum of Science and Industry, The Florida Aquarium and Lowery Park Zoo.

**(No Meeting in December)**

**Our next meeting will be January 21, 2004  
at the Learning Gate Charter School.**



## **Fall Plant Sale Thank You**

By Sally Sun

The fall USF Botanical Garden Plant Sale took place October 11 and 12. Seventeen members volunteered their time to help make this a successful event. SNPS member Rick Brown's RiverView Flower Farm delivered about 900 plants Thursday, October 9 and Cypress Acres brought another 225 plants. On Friday, October 10, Sally Sun started the day with Lori Milam, owner of Florida Natives Nursery on Livingston Ave. The set-up crew – Cliff Brown, Mike Fite, Barb and Fred Mulholland and Sally – assembled at the USF Botanical Garden around 9:00 a.m. We set up the tables and plants and had the area ready-to-go in a couple of hours. There were a couple of more deliveries during the day. We had a very nice selection of plants – about 60 species of trees, shrubs, ground covers, wildflowers, ferns, and vines.

On Saturday, most of the volunteers arrived by 8 a.m. The last of our deliveries arrived at 7:30 and we scurried to get the plants off the truck and into position. The Botanical Garden members started arriving at 9:30 a.m., and the public at 10 a.m. On hand to assist were Margaret Belcher, Cliff Brown, Mel Brown, Betsy Davis, Emily Ferguson, Lucy Hoyt, Diane Lane, Voni Moore, Fred Spriggs, Sally Sun, and Harriett Wright. Fall always has fewer buyers than the spring, but we still had a good-sized crowd.

Assisting on Sunday were Kim Friedland and Sally Sun; George Kish was also there in the morning and Joanne Kitchen came for the afternoon. Cliff Brown came close to closing time to help disassemble. It started to rain about ten minutes before closing, which abruptly ended the sale. The crowds were definitely less this day, but we still did a good business.

A big "Thanks!" to everyone who gave up part of their weekend to help make the plant sale successful. As a thank-you, each volunteer received a wildflower of their choice.

Financially, we had gross sales of \$2,640 and netted about \$1,010. The various events throughout the year, and especially the semiannual plant sales, are vital to SNPS. Part of the purpose of SNPS is educating the public about of native plants. The earnings from these sales help to pay for grants, special speakers' expenses, the newsletter, and educational projects throughout the area. If you can find a few hours to volunteer next spring, your help would be appreciated. It is a great way to learn about Florida's native plants; and it's fun!! "Y'all come out and join us."

## **TREE POTTING PROJECT**

**SATURDAY, JANUARY 17TH, 2004, 10:00 am**

Volunteers are needed to assist Tampa Bay Reforestation and Environmental Effort (TREE) with a tree potting project. The project will involve the potting of seedlings to be used in environmental restoration projects for 2004 and 2005 and will take place at the TREE nursery just north of Eureka Springs County Park. Seedlings will include Slash Pine, Bald Cypress, Sweetgum, Chapman Oak, Hercule's Club, and Devil's Walking Stick.

No experience needed. Bring gloves and friends. Please RSVP and for more information, call Rick Strickland at (813) 920-0757. We hope for your participation in this worthwhile service project. Community Service Hours are available.

### **Directions to the nursery:**

Take Interstate 4 to the U.S. 301 north exit. Proceed north on U.S. 301 to the first traffic light, which is at Sligh Avenue. Turn right; proceed past the dairy to Maple Lane Road. Maple Lane Road will curve east crossing over the Tampa ByPass Canal and becomes Eureka Springs Road. Eureka Springs Road will curve again, proceeding north. Continue on Eureka Springs Road past Sligh Avenue and turn left at the first driveway that is about a block past the airport access road (that is the only paved road to intersect Eureka Springs Road from the west).

### **Plant Raffle Guidelines**

By Harriett Wright

When you bring plants to the plant raffle, please sign the raffle sheet and record the number of plants you donated. Before the start of the raffle, we will offer first choice of a plant on the raffle table to our speaker, followed by plant donors in the order of the number of plants donated. After these selections have been made, we will begin the raffle.

Thank you to all the members who donated plants at the last meeting.

# Suncoast Calendar

**REGULAR MEETINGS OF SUNCOAST NATIVE PLANT SOCIETY** at the Learning Gate Charter School, 16215 Hanna Road, in Lutz. 7 PM  
JAN 21 FEB 18 MAR 17 APR 21

**SNPS 2004 FIELD TRIP SCHEDULE** Field trips begin at 9:00 am. Contact Steve Dickman, 813-936-7268 for more information. Trails are rated moderate unless noted. Dates subject to change.

**PROGRAMS AND EVENTS at the FNPS Pinellas Chapter:** (Moccasin Lake Nature Park, 2750 Park Trail, Clearwater; 727-544-7341); Weds; 7:30 pm

**Jan 7** “Pollinating Insects”

**Jan 10** Field Trip to Clearwater maple swamp.

## **TAMPA AUDUBON FIELD TRIPS**

They meet 7 times a year on Saturdays at Lettuce Leaf Park off Fletcher. Call 983-0258.

**Jan 17** Travels in Cuba

## **LOWRY PARK ZOO**

**16 – 23** from 6 p.m. – 9 p.m.

Celebrate the holidays at Lowry Park Zoo’s Annual Wild Wonderland winter festival

## **HILLS CO. MASTER GARDNER PROGRAMS.**

Call 813-744-5519 x144 for information about locations or visit the website: [hillsborough.extension.ufl.edu/calendar.htm](http://hillsborough.extension.ufl.edu/calendar.htm).

**Jan. 6**– Bonsai, Debbie McLaury: 7 p.m.

**Jan. 8** – Camellias, Eileen Hart: 10 a.m.

**Jan. 8**– Florida Lawns, Lisa Strange: 10 a.m.

**Jan 10** - Compost Happens Workshop, 8 a.m. - 9 a.m.

Pre-registration is required, 744-5519 X142 or X146.

**Jan 12** – Good Bugs/Bad Bugs, Ardell O’Neal: 7:30 pm.

**Jan 13** – Daylilies, George Roberts: 7 p.m.

**Jan 13** – Bonsai, Debbie McLaury: 7 p.m.

## **IMPORTANT CONSUMER NOTICE**

### **SEARCH FOR SCENTED PINE CONES INVOLVED IN NATIONAL RECALL**

TALLAHASSEE -- Florida Agriculture and Consumer Services Commissioner Charles H. Bronson is urging consumers who have purchased potpourri that includes scented pine cones **made in India** at ANY location in Florida to return them to the point of purchase. The United States Department of Agriculture initially issued a recall of the pine cones sold in Target Stores after an infestation of wood-boring beetles was found in the product, which is part of a potpourri arrangement. However, Department inspectors have now discovered the pest in a Wal-Mart store in Charlotte County and they have expanded their search to any establishment that sells scented pine cone potpourri products, including supermarkets.

Live adults and larvae of *Chlorophorus strobilicola* (Cerambycidae) have also been found in Target Stores in Lake Mary, Largo, **Tampa**, Jacksonville and Coral Springs. While the USDA recall currently only impacts Target Stores, in an abundance of caution Department inspectors began looking at other retail outlets. That’s when they discovered the beetle at a Wal-Mart Store in Murdock, Florida, in the Candle-Lite Potpourri-brand product.

Consumers who have purchased scented pine cones should return them to the store. If they have already opened the package, they are urged to **double bag the item** and return it to the store or double bag the product, tie it securely and dispose of it in the trash.

Scientists are still trying to determine whether this species of beetle would impact the types of pine trees grown in Florida and elsewhere around the Southeast, but they have not ruled out the possibility. Exotic pests are sometimes able to adapt to a new host when the natural host is no longer present.

The impact of the larval damage to pine cones is reduced seed production, which would be a serious problem in the United States if the beetle could successfully attack native pines. Major forest industries depend on reliable pine seed sources in reforestation programs. The scented pine cones originated in India where the *Chlorophorus strobilicola* is found. The beetles have also been found in NC, MA and New Jersey.

Target stores, which number 79 in Florida, have put a stop sale on this item and have agreed to incinerate, under USDA supervision, remaining inventory and returned material. While USDA has not expanded the recall beyond the Target Stores, Bronson says the discovery of the beetle in a Wal-Mart is clear indication the product has been shipped to other retailers. USDA records indicate that shipments of this project have been crossing into Canadian border ports since April 2003. Cooperation between U.S. Customs and Border Protection has been requested.

For more information contact the toll-free helpline at (888) 397-1517.



## Activities & Committee Chairs

### Field trips

Steve Dickman 936-7268  
Cliff Brown 988-3211

### Publications

Richard Wunderlin 977-6484

### Librarian

Vikki Sinclair 989-2896

### Membership

George Kish 920-0853

### Newsletter editor

George Kish 920-0853

### Programs

Harriett Wright 908-9398

### Publicity

Ameé Bailey 662-5954

### Refreshments

Lucy Hoyt 960-3178

### Education

Betty Wargo 237-1509

### Book Sales

Sally Sun 935-1312

### USF Plant Sale

Sally Sun 935-1312

### Conference

Ameé Bailey 662-5954

## Officers & Board of Directors

### President

George Kish 920-0853

### Vice-presidents

Harriett Wright 908-9398

### Secretary

Ameé Bailey 662-5954

### Treasurer

Fred Spriggs 935-1312

### Chapter Representative

Ameé Bailey 662-5954

### Board Members

Ameé Bailey 662-5954

Cliff Brown 988-3211

Steve Dickman 936-7268

George Kish 920-0853

Bob Scheible 626-6815

Fred Spriggs 935-1312

Harriett Wright 908-9398

## Newsletter Submissions

**Deadline for the next issue:**

**January 5**

Please send articles and original artwork for The Suncoast Grapevine to the editor, Shirley Brown, by the **deadline** of each month (earlier, please, if not typed). Text should be in MS Word; graphics should be in a standard graphic format. Previously published artwork should be accompanied by a letter of permission from the original publisher.

Mail:..... SNPS, Inc.

P.O. Box 82893

Tampa, FL 33682-2893

Email:...srbrown11@msn.com

## SNPS Address

**Suncoast Native Plant Society, Inc.**

**P.O. Box 82893**

**Tampa, FL 33682-2893**

## Meeting Location

Suncoast Native Plant Society, Inc. meets the third Wednesday of the month at 7:00 p.m. at the **Learning Gate Charter School, 16215 Hanna Road, Lutz.**

## SNPS Web Address

**[www.fnps.org/chapters/suncoast](http://www.fnps.org/chapters/suncoast)**

## Grapevine Subscription

You may subscribe to the Suncoast Grapevine (not including membership in the SNPS or the FNPS) for \$10 per year. Contact George Kish at 920-0853.

**Stamp**



**Please deliver to:**